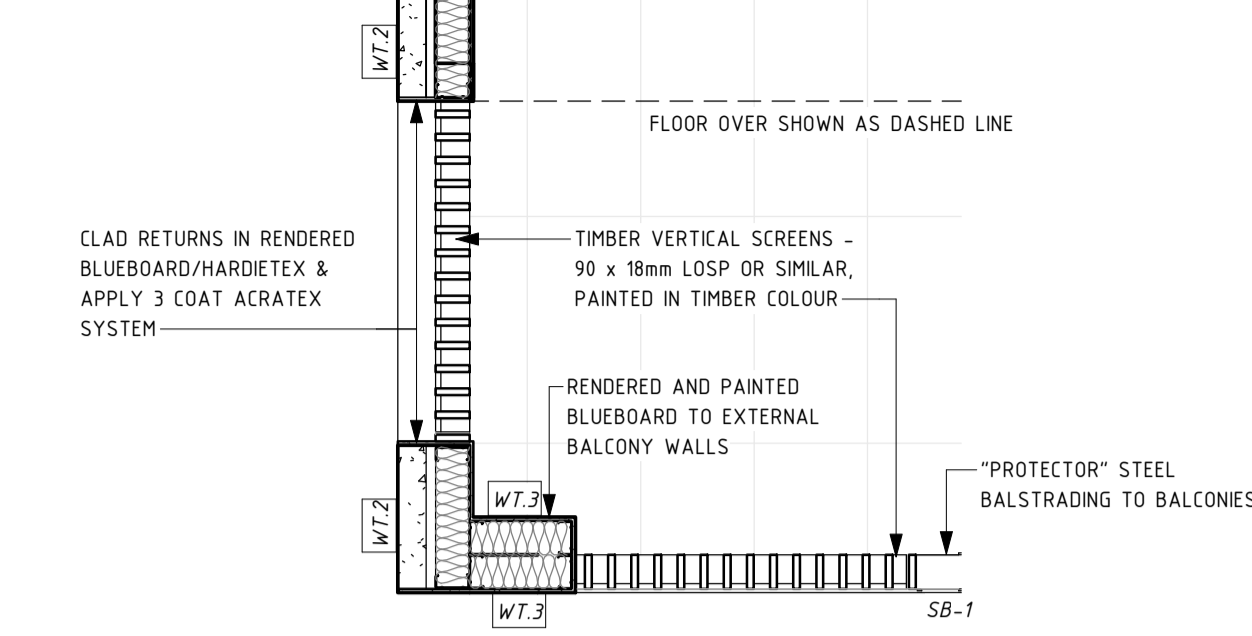
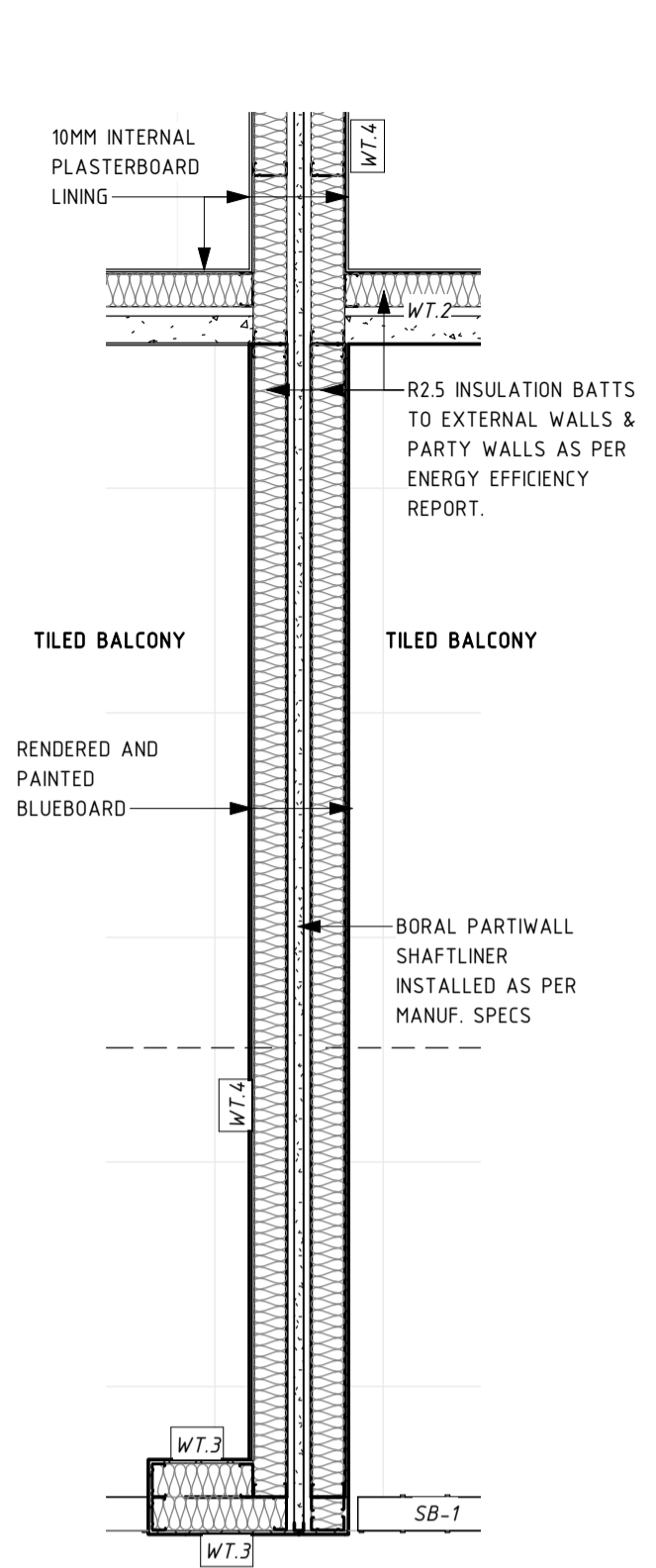


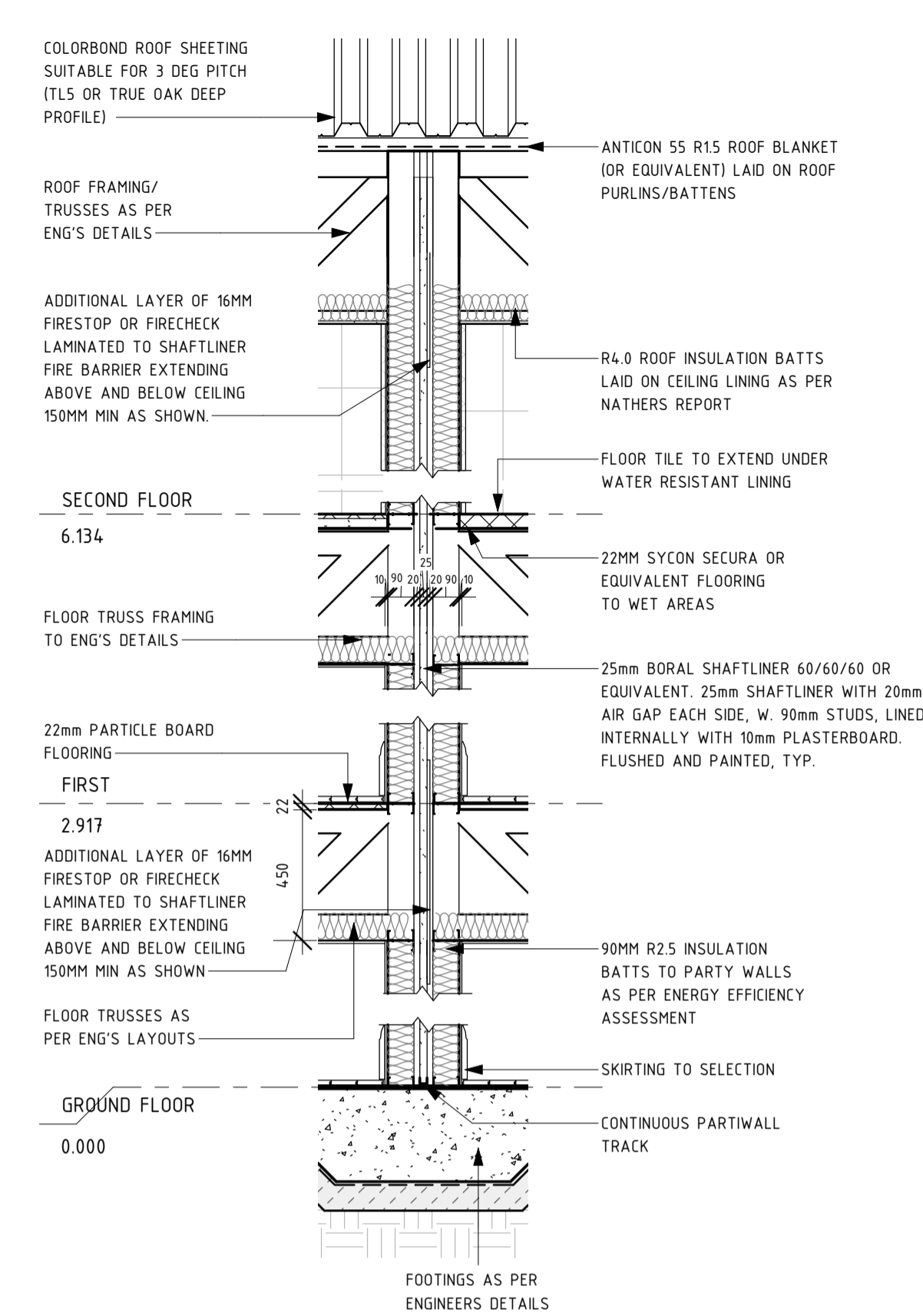
PD.01
WD.A.101
A-PLAN DETAIL 1
1 : 20



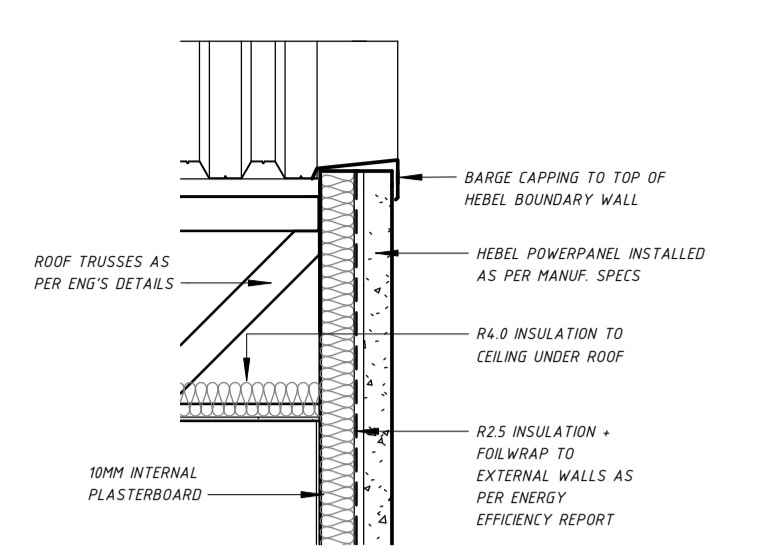
PD.03
WD.A.102
A-PLAN DETAIL 3
1 : 20



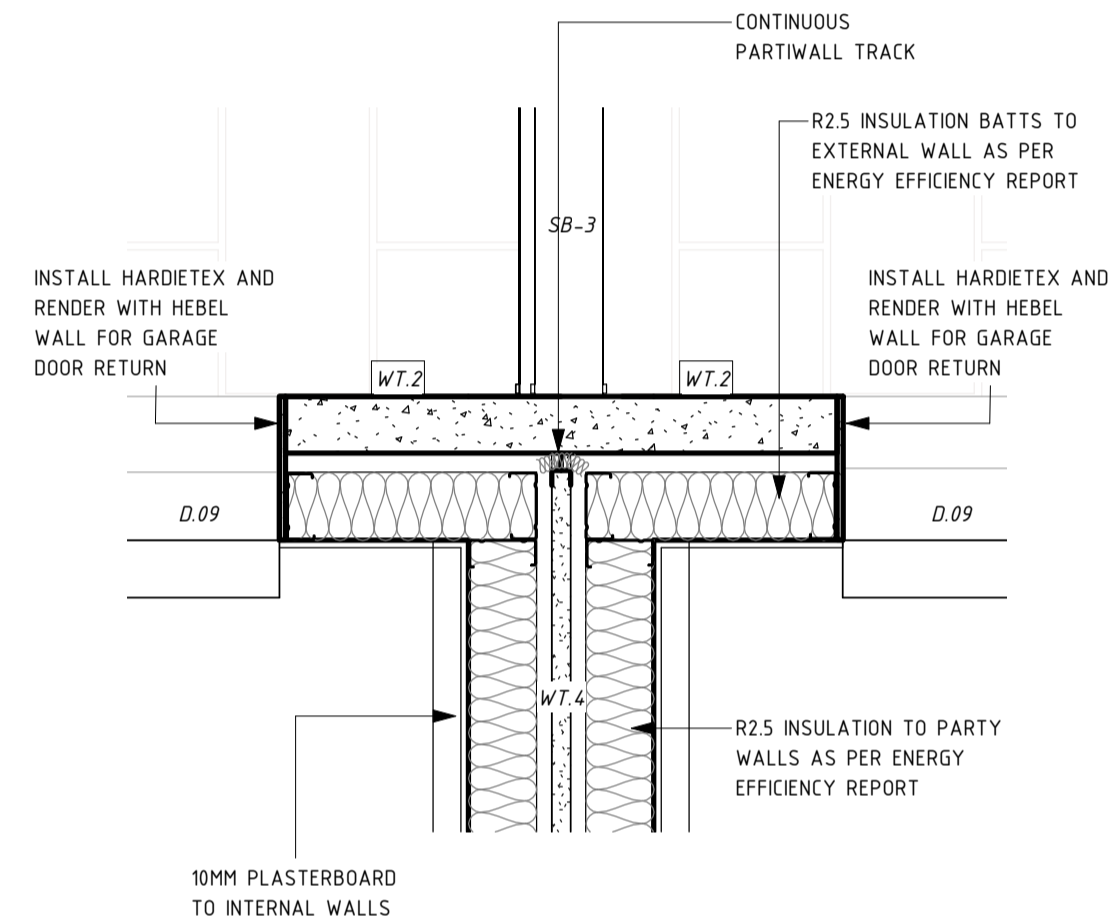
PD.04
WD.A.102
A-PLAN DETAIL 4
1 : 20



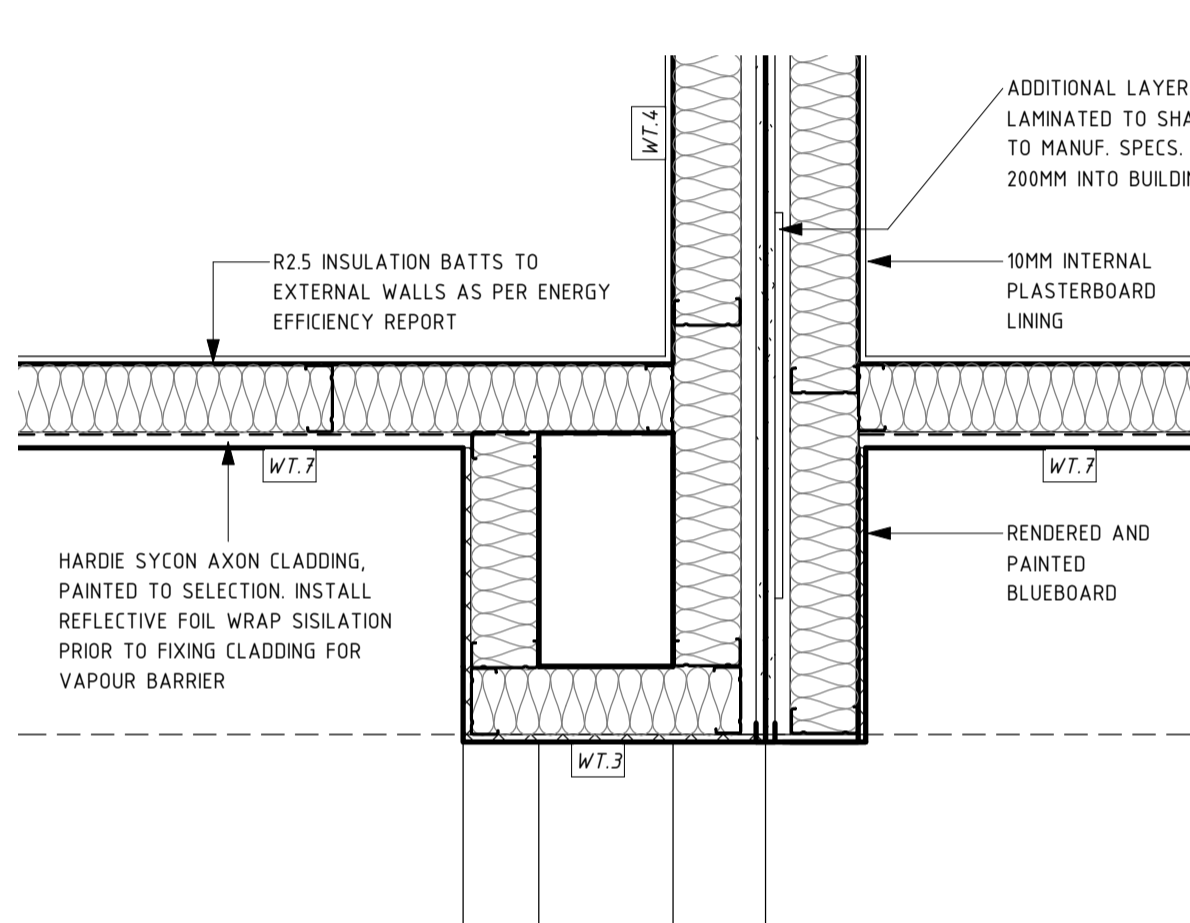
SD.01
WD.A.105
A-SECTION DETAIL 1
1 : 20



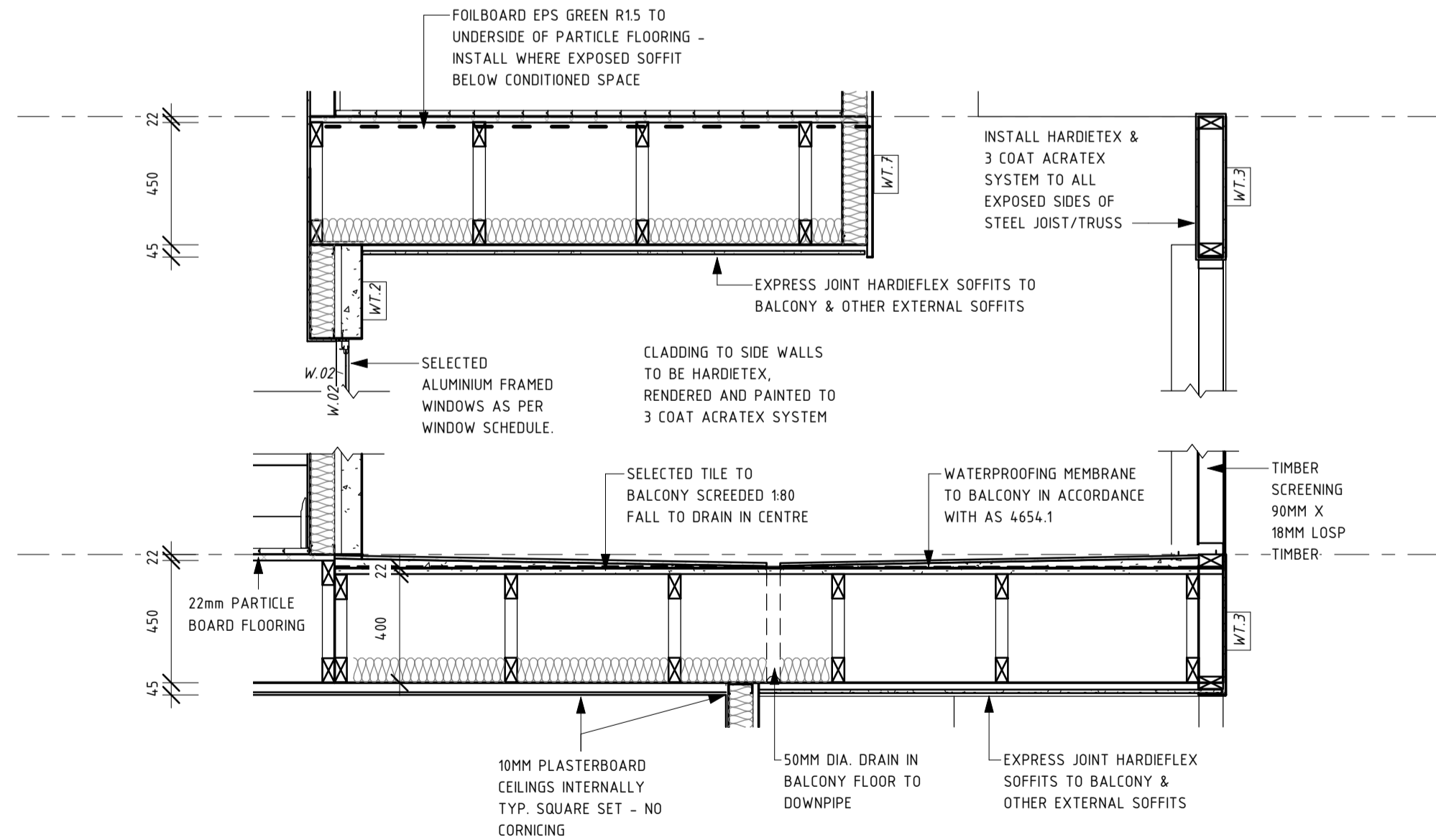
SD.02
WD.A.105
A-SECTION DETAIL 2
1 : 20



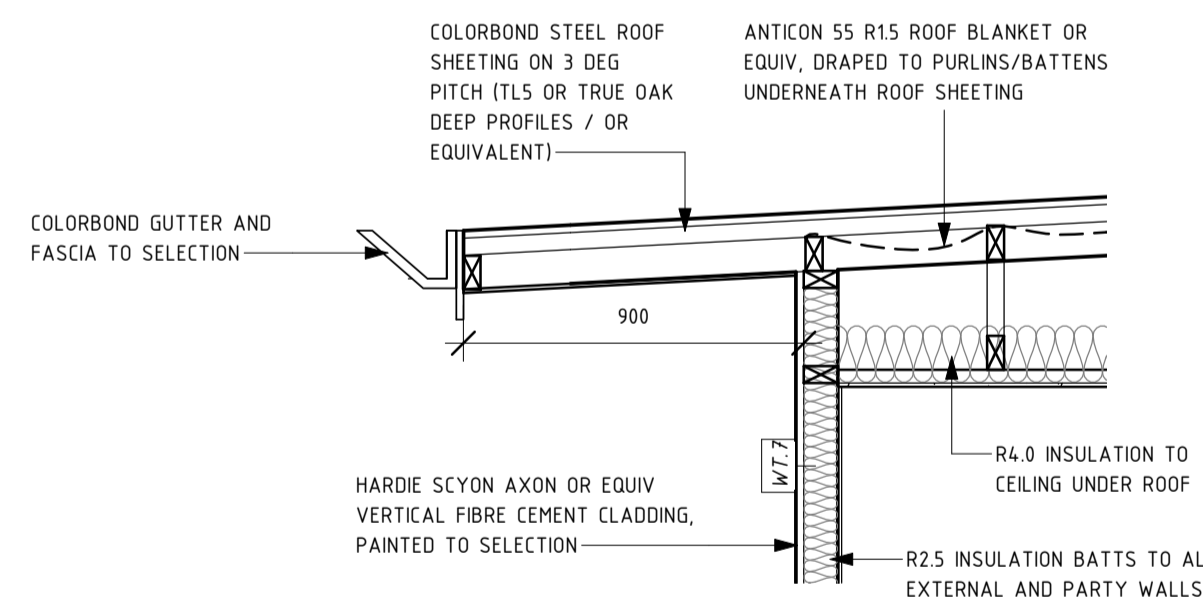
PD.02
WD.A.101
A-PLAN DETAIL 2
1 : 10



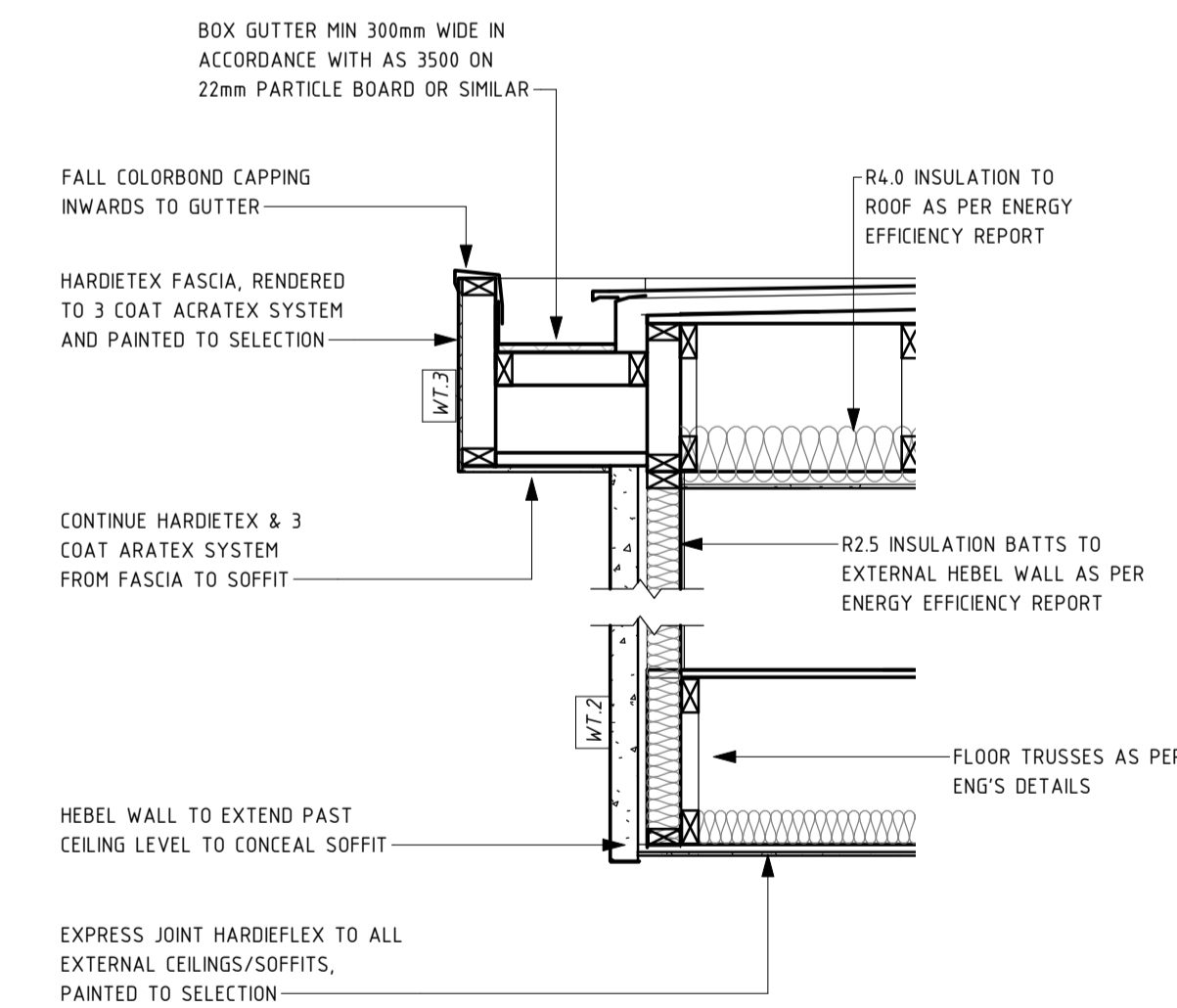
PD.05
WD.A.103
A-PLAN DETAIL 5
1 : 10



SD.03
WD.A.106
A-SECTION DETAIL 3
1 : 20



SD.05
WD.A.106
A-SECTION DETAIL 5
1 : 20



SD.06
WD.A.106
A-SECTION DETAIL 6
1 : 20

A.LEGEND	
KEY	DESCRIPTION
RBW	RENDERED BLOCK WALL
SB-1	1000mm HIGH VERTICAL STEEL BALUSTRADE TO BALCONIES
SB-2	1400mm HIGH VERTICAL SLAT FENCING TO FRONT FENCES
SB-3	1800mm HIGH HORIZONTAL SLAT FENCE SCREENING TO REAR OF TOWNHOUSES / CAR SPACES
TS	VERTICAL TIMBER SCREENING, PAINTED BROWN/TIMBER COLOUR TO MATCH FRONT TIMBER DOOR
WT.2	RENDERED (3 COAT ACRATEX SYSTEM) CEMENT FIBRE CLADDING (HARDIETEX) FIXED TO FRAMING
WT.3	RENDERED (3 COAT ACRATEX SYSTEM) CEMENT FIBRE CLADDING (HARDIETEX) FIXED TO FRAMING
WT.4	BORAL PARTI WALL SYSTEM (PWT60.1A). 25mm SHAFTLINER WITH 20mm CAVITY BOTH SIDES, THEN 92mm STEEL STUDS TO FRAMING LAYOUT DETAILS, FLUSHED AND PAINTED 10mm SOUNDSTOP PLASTERBOARD INTERNALLY.
WT.7	SCYON STRIA VERTICAL CLADDING, PAINTED TO SELECTION

REVISIONS		
ISSUE #	DATE	DESCRIPTION
E	14/06/2020	STAGE A ISSUE FOR BRC
F	23.06.2020	FOR TENDER

AUTHOR
GB

REVISION DESCRIPTION
FOR TENDER

CLIENT
82 JOHNS ROAD PTY LTD

CITIFY



PROJECT ADDRESS
82 - 90 JOHNS ROAD, PROSPECT SA 5082

FOR CONSTRUCTION

SHEET TITLE
DETAILS 01

REVISION
F

ISSUE DATE
23/06/2020

SHEET NUMBER
WD.A.107